

Legend

- Wild & Scenic River Boundary
- Sage-Grouse Winter Habitat

Surface Ownership

- National Monument (BLM)
- Other BLM
- US Forest Service
- Indian Lands or Reservation
- C.M. Russell National Wildlife Refuge
- State
- Private

The BLM has no jurisdiction over private or state land and minerals, and these lands and minerals are not part of the Monument. Landowner permission is required for access to private property.

Upper Missouri River Breaks National Monument Proposed RMP/Final EIS Greater Sage-Grouse Winter Habitat

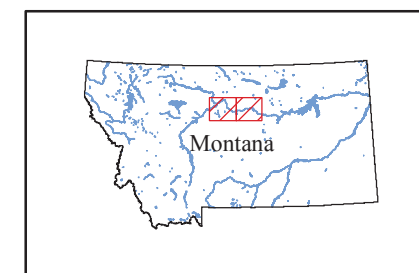


Montana Fish, Wildlife and Parks greater sage-grouse overall winter habitat. The data is intended to provide a broad landscape perspective of sage-grouse habitat and distribution.

Disclaimer
Base data derived from USGS digital and mylar 1:100,000 scale maps. No warranty is made by the Bureau of Land Management (BLM) for use of the data for purposes not intended by BLM.

Generated by the Lewistown Field Office - January 2008.

The map projection is in Albers; the data is in NAD 27; and the units are in meters.



Map L